



Customer: White Label Bros  
Customer Sample ID: Hot Sauce FS 102620  
Laboratory Number: 20K0184-18



## Cannabinoid Profile

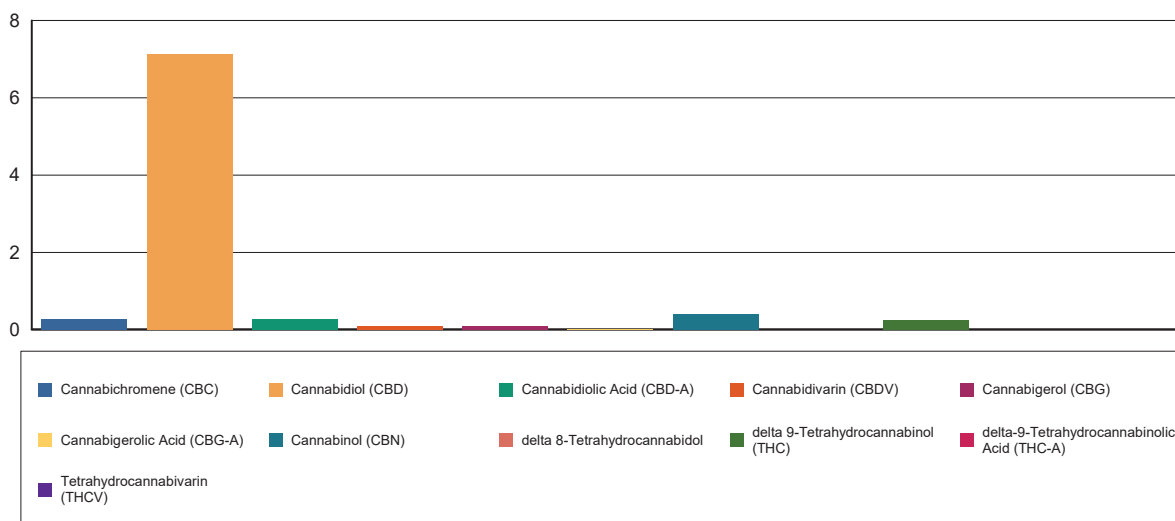
Extraction Technician: CB  
Analytical Chemist: CB

Extraction Date(s)	Analysis Date(s)
11/9/2020	11/10/2020

Cannabinoids (HPLC)		Results	
	LOD (mg/g)	%	mg/g
Cannabidivarin (CBDV)		0.01	0.103
Cannabidiolic Acid (CBD-A)		0.03	0.286
Cannabigerolic Acid (CBG-A)		0.002	0.018
Cannabigerol (CBG)		0.01	0.105
Cannabidiol (CBD)		0.71	7.13
Tetrahydrocannabivarin (THCV)	<0.006		
Cannabinol (CBN)		0.04	0.390
delta 9-Tetrahydrocannabinol (THC)		0.02	0.247
delta 8-Tetrahydrocannabinol	<0.006		
Cannabichromene (CBC)		0.03	0.265
delta-9-Tetrahydrocannabinolic Acid (THC-A)	<0.006		
Cannabinoids Total		%	mg/g
Max Active THC		0.02	0.25
Max Active CBD		0.74	7.38
T.Active Cannabinoids		0.81	8.14
Total Cannabinoids		0.85	8.54

Following USDA guidelines on uncertainty, Altitude Consulting's uncertainty are calculated for CBDa and CBD at +/- 4%. The uncertainty for THCa and THC are +/- 5%. This implies the range for a 10% value of CBD to be 9.6-10.4%. The uncertainty range for a 0.30% value of THC would be 0.28-0.32%. The measurement uncertainty is calculated using a coverage factor of 2.

### Cannabinoid (mg/g)



Reporting Limits will vary based on sample extraction weight used for the analysis.

Altitude Consulting, LLC utilizes NIST traceable Reference Standards and Certified Reference Material to calibrate analytical instruments along with proven analytical methods. The methods are applied in the most ethical manner following good laboratory practice guidelines. The results of this report are based solely on the sample submitted and cannot be reproduced.