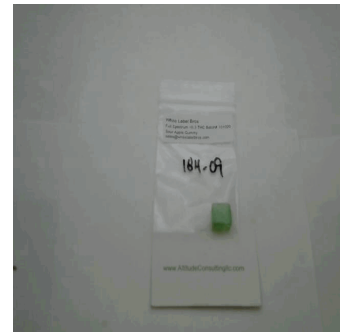




**Customer:** White Label Bros  
**Customer Sample ID:** Sour Apple Gummy FS 101020  
**Laboratory Number:** 20K0184-09  
**Servings per Container:** 3.1657



# Cannabinoid Profile

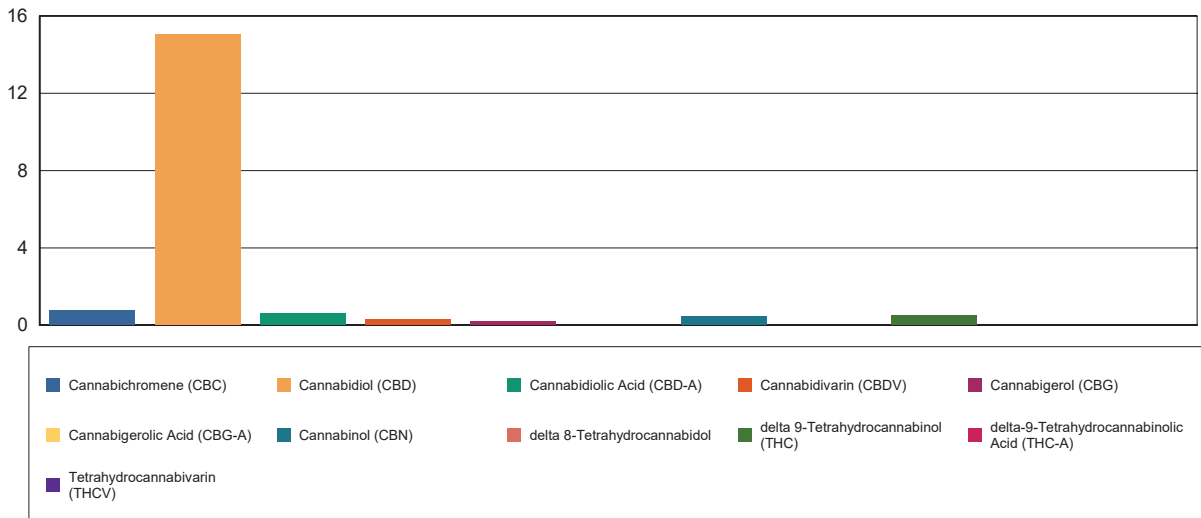
**Extraction Technician:** CB  
**Analytical Chemist:** CB

Extraction Date(s)	Analysis Date(s)
11/9/2020	11/10/2020

Cannabinoids (HPLC)		Results		
	LOD (mg/g)	%	mg/g	mg/gummy
Cannabidivarin (CBDV)		0.03	0.299	0.946
Cannabidiolic Acid (CBD-A)		0.06	0.581	1.84
Cannabigerolic Acid (CBG-A)	<0.060			
Cannabigerol (CBG)		0.02	0.190	0.602
Cannabidiol (CBD)		1.50	15.0	47.5
Tetrahydrocannabivarin (THCV)	<0.006			
Cannabinol (CBN)		0.04	0.437	1.38
delta 9-Tetrahydrocannabinol (THC)		0.05	0.513	1.62
delta 8-Tetrahydrocannabidol	<0.006			
Cannabichromene (CBC)		0.07	0.739	2.34
delta-9-Tetrahydrocannabinolic Acid (THC-A)	<0.006			
Cannabinoids Total		%	mg/g	
Max Active THC		0.05	0.51	
Max Active CBD		1.55	15.51	
T.Active Cannabinoids		1.69	16.90	
Total Cannabinoids		1.78	17.80	

Following USDA guidelines on uncertainty, Altitude Consulting's uncertainty are calculated for CBDa and CBD at +/- 4%. The uncertainty for THCa and THC are +/- 5%. This implies the range for a 10% value of CBD to be 9.6-10.4%. The uncertainty range for a 0.30% value of THC would be 0.28-0.32%. The measurement uncertainty is calculated using a coverage factor of 2.

## Cannabinoid (mg/g)



Reporting Limits will vary based on sample extraction weight used for the analysis.

Altitude Consulting, LLC utilizes NIST traceable Reference Standards and Certified Reference Material to calibrate analytical instruments along with proven analytical methods. The methods are applied in the most ethical manner following good laboratory practice guidelines. The results of this report are based solely on the sample submitted and cannot be reproduced.